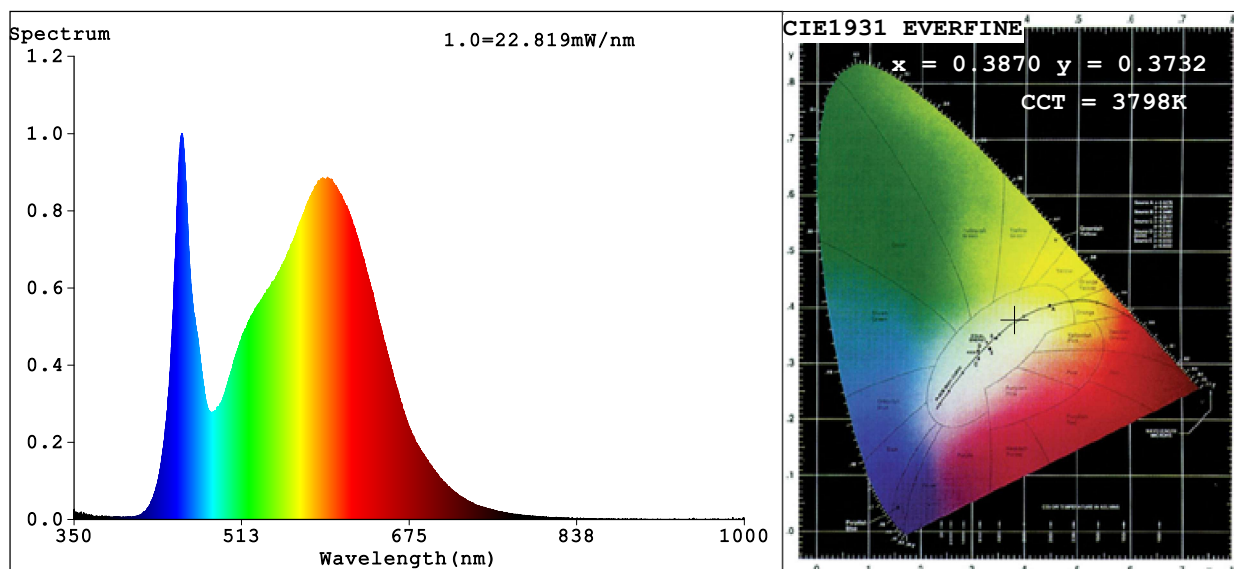


Spectrum Test Report



Color Parameters:

Chromaticity Coordinate: $x=0.3870$ $y=0.3732$ $u'=0.2309$ $v'=0.5010$

CCT=3798K (Duv=-0.0035) Dominant WL:Ld =581.8nm Purity=28.1%

Ratio:R=19.3% G=76.8% B=3.8%; Peak WL:Lp=454.7nm FWHM=22.7nm

Render Index:Ra=84.0 CRI=78.3 TM30:Rf=81 Rg=95

R1 =83 R2 =93 R3 =95 R4 =81 R5 =83 R6 =89 R7 =84

R8 =64 R9 =15 R10=82 R11=79 R12=65 R13=86 R14=98 R15=78

Photo Parameters:

Flux = 1107 lm Eff. : 22.99 lm/W Fe = 3.447 W

Electrical parameters:

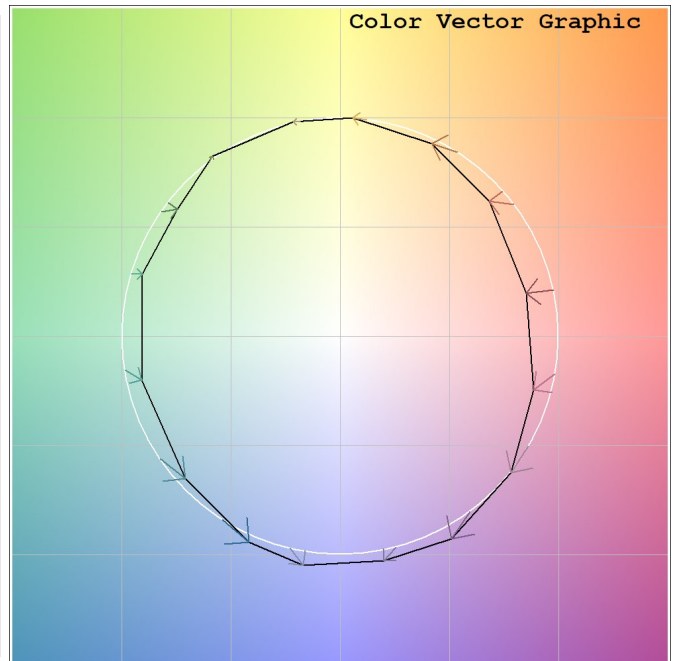
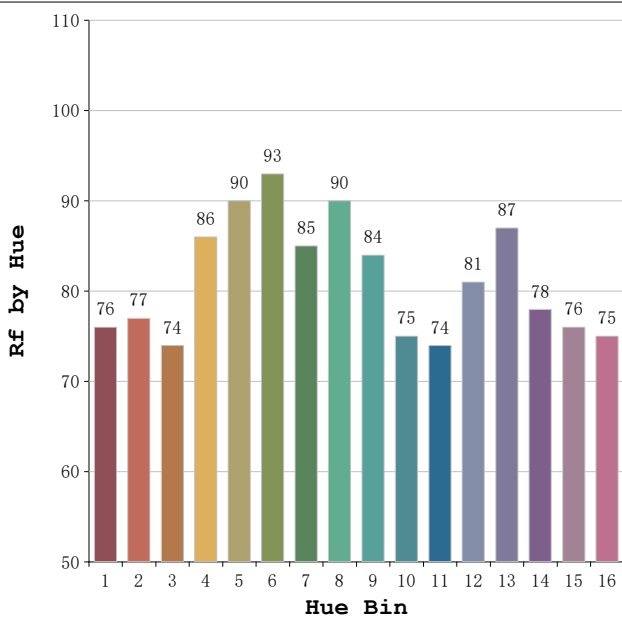
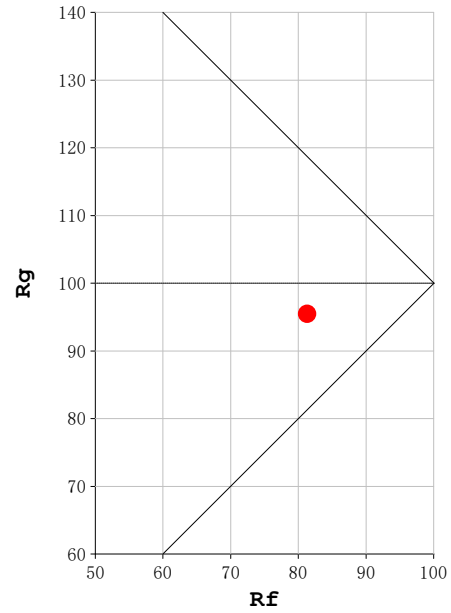
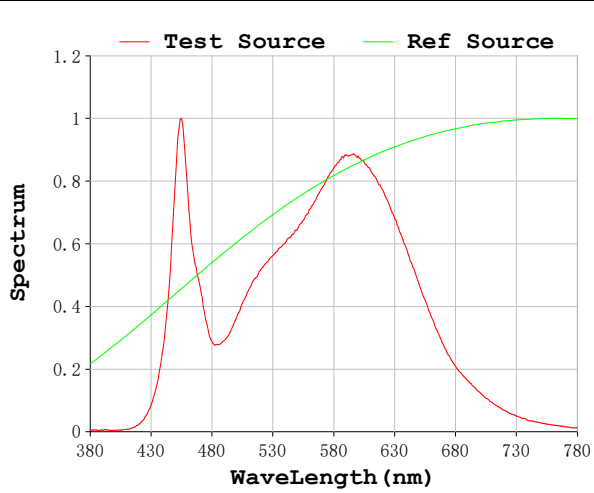
V = 23.998 V I = 2.007 A P = 48.17 W PF = 1.000

Status: Integral T = 1160 ms Ip = 39719 (61%)

Model:Ecoled Neón Sing 4000
Tester:Sergio Carneros
Temperature:20Deg
Manufacturer:Luz Negra

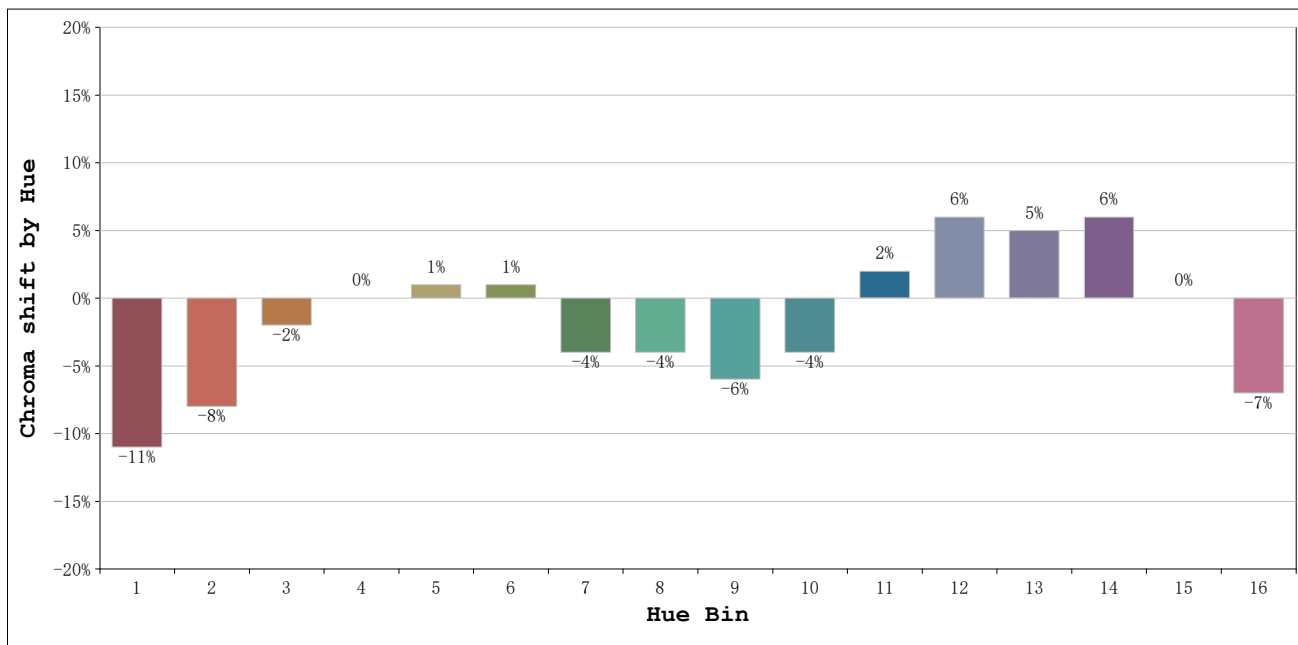
Number: 10.256
Date:2025-06-02 12:20:41
Humidity:50%
Remarks:500cm de neón

Rf: 81 **CCT: 3798 K** **u': 0.2309**
Rg: 95 **Duv: -0.0035** **v': 0.5010**



Model:Ecoled Neón Sing 4000
 Tester:Sergio Carneros
 Temperature:20Deg
 Manufacturer:Luz Negra

Number: 10.256
 Date:2025-06-02 12:20:41
 Humidity:50%
 Remarks:500cm de neón



			Graphic shift(%)	
Hue Bin	Hue Angle	Rf	Chroma	Hue
1	0.0° - 22.5°	76	-11	1
2	22.5° - 45.0°	77	-8	7
3	45.0° - 67.5°	74	-2	12
4	67.5° - 90.0°	86	0	7
5	90.0° - 112.5°	90	1	3
6	112.5° - 135.0°	93	1	-2
7	135.0° - 157.5°	85	-4	-4
8	157.5° - 180.0°	90	-4	0
9	180.0° - 202.5°	84	-6	6
10	202.5° - 225.0°	75	-4	14
11	225.0° - 247.5°	74	2	16
12	247.5° - 270.0°	81	6	7
13	270.0° - 292.5°	87	5	-5
14	292.5° - 315.0°	78	6	-13
15	315.0° - 337.5°	76	0	-13
16	337.5° - 360.0°	75	-7	-8

Model:Ecoled Neón Sing 4000
 Tester:Sergio Carneros
 Temperature:20Deg
 Manufacturer:Luz Negra

Number: 10.256
 Date:2025-06-02 12:20:41
 Humidity:50%
 Remarks:500cm de neón